

Exhibiting Information for Next Shows



BIOMASS EXPO

12th Int'l Biomass Expo

Tokyo Show in March

Dates: Mar. 24 [Wed] - 26 [Fri], 2027

Venue: Tokyo Big Sight, Japan

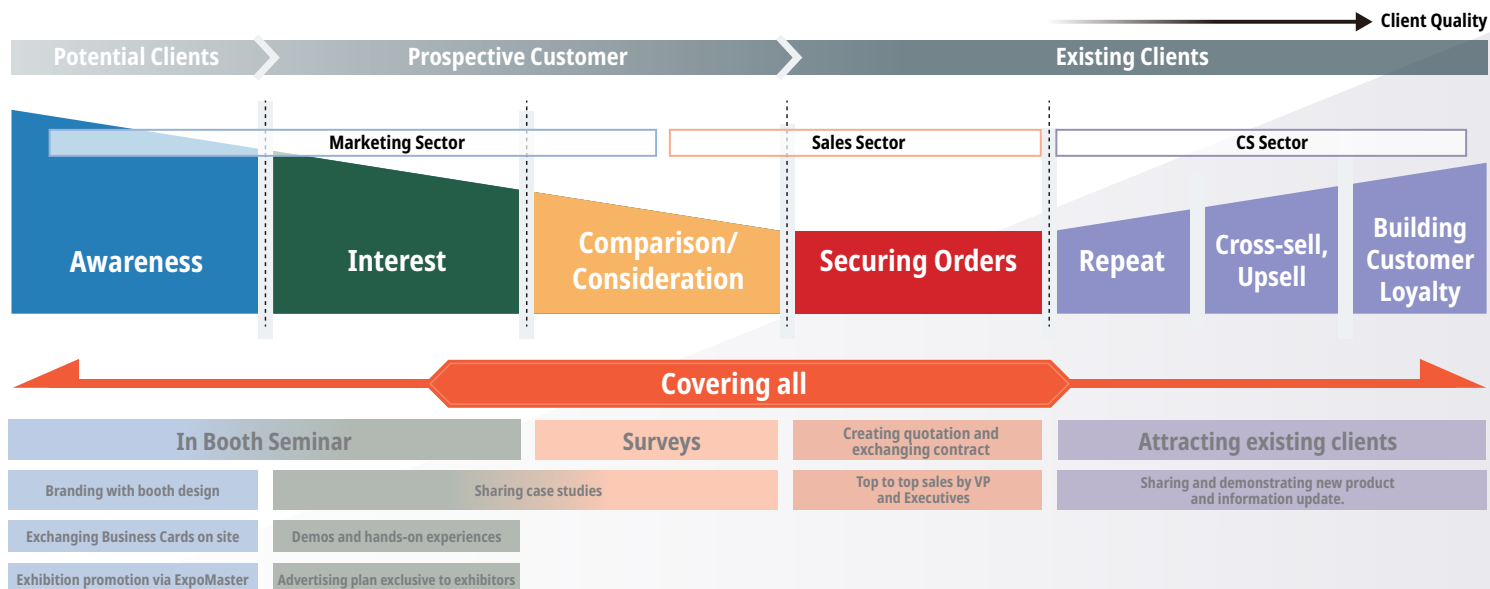


Organiser: RX Japan GK
**Co-organisers: Japan Woody Bioenergy Association/
Japan Organics Recycling Association**

Trade Shows Serve as a Comprehensive Lead Generation Channel

Trade shows enable end-to-end sales growth activities, from lead generation to repeat customer engagement.

RX Japan is Japan's leading trade show organizer, hosting 106 exhibitions annually across 38 industries. With a vast database built from all 106 shows and proven expertise in creating "profitable exhibitions" for exhibitors, we are committed to helping your business grow.



INDEX

About Smart Energy Week	3
About “BIOMASS EXPO”	
Exhibit & Visitor Profile of Biomass Expo	4
Previous Show Report	
Scene from Show Venue	5
Visitor Details	6
Past Conference Speakers	7
Key highlights of Each edition	
Highlights of the Spring Edition	8
Price List and Schedule	
Exhibiting Fee and Expo Master	9
Rental Display	10
Sponsorship Plan	11
Advertisement Plan	12
Schedule Leading Up to the Exhibition	13

What is Smart Energy Week

Comprehensive Next Generation Energy Expo - A World-Class Event!!

Renewable energy is growing fast as the world works toward carbon neutrality. This exhibition is one of the biggest in the world for new energy.

Experts from around the world attend, making it a key event in the industry. It's a great place to meet face-to-face, share ideas, and grow your energy business. A special exhibition on sustainable business will also be held at the same time.



H₂ & FC EXPO

Int'l Hydrogen & Fuel Cell Expo



PV EXPO

Int'l Photovoltaic Power Generation Expo



BATTERY JAPAN

Int'l Rechargeable Battery Expo



SMART GRID EXPO

Int'l Smart Grid Expo



CCUS EXPO

Int'l Carbon Dioxide Capture, Utilisation and Storage Expo



World Meets Energy

SMART ENERGY WEEK

Held concurrently



Transforming Businesses, Building a Sustainable World

SUSTAINABILITY MANAGEMENT WEEK

Previously known as: Green Transformation Week



WIND EXPO

Int'l Wind Energy Expo



BIOMASS EXPO

Int'l Biomass Expo



ZERO-E THERMAL EXPO

Zero Emission Thermal Power Generation Expo



DECARBONISATION EXPO



CIRCULAR ECONOMY EXPO

B-to-B Trade Show for Industry Experts

Best Platform to Increase Your Presence & Meet New Customers

■ Exhibit & Visitor Profile

Exhibitors

Companies dealing in the following categories:

- Biomass Fuel
- Crusher/Pulveriser
- Dehydrator/Dryer
- Inspection/Testing Technology
- Manufacturing Equipment
- Methane Fermentation Equipment
- Power Generation, Heat Utilisation

etc.

Business Meetings

- ◆ Receive orders for products and technologies
- ◆ Business Alliance
- ◆ Quotation and Delivery Arrangement

Visitors

Professionals from:

- Biomass Power Generator
- Government/Municipality
- Forest Management Union
- Agricultural Corporation
- Industrial Waste
- Disposal Company
- Corporate User (Public Facility, Factory)
- New Entrant to Energy Industry

etc.

The Best Gateway to the Japan & Asia's Biomass Market!

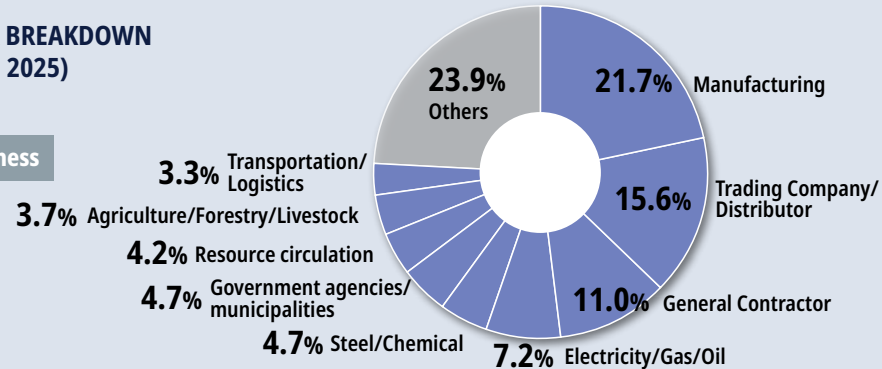
*Regarding the Spring edition. Comparison of the Number of Exhibitors and Exhibit Space with Similar Trade Shows.



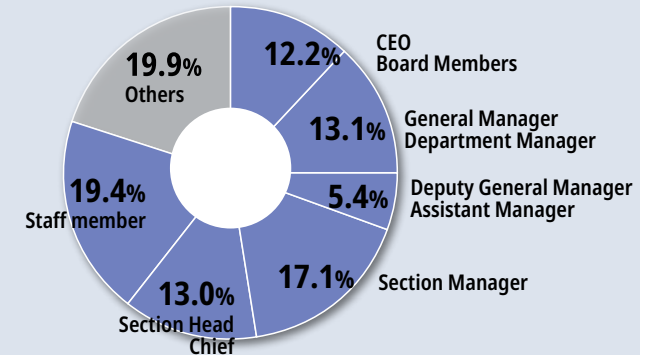
Meet with Biomass Market Leaders

VISITOR BREAKDOWN (MARCH 2025)

Type of Business



Job Function



< Past Visitors (Company names are excerpts and shortened in random order.) >

- | | | | | | | | |
|--|--|---|---|--|--|--|---|
| <ul style="list-style-type: none"> • AGRICULTURE AND FOOD INDUSTRY TECHNOLOGY INSTITUTE • AICHI PREFECTURE • AITH MANAGEMENT • ASANO DAISEI FOUNDATION ENGINEERING • ASSET HOLDINGS • ATAGO GLOBAL ENERGY • ATOM • ATOX • BIOCLASSICS HANDA • BIOMASS POWER GENERATION OPERATORS ASSOCIATION • BWSC JAPAN • CENTRAL UNION OF AGRICULTURAL COOPERATIVES • CHICHIBU DOKEI • CHIEN TAKAGUMI • CHUBU PLANT SERVICE • CHUKYU SOLAR SYSTEM • CRIHULANT • CSS • DAIGAS ENERGY • ENBIO ENGINEERING | <ul style="list-style-type: none"> • ENERGIA POWER YAMAGUCHI • ENERGY VISION • ENEWHALE • EQUICENTRAL SERVICE JAPAN • E-TOP • EXIO GROUP • FOREST ENERGY • FORESTRY AND FOREST PRODUCTS RESEARCH INSTITUTE • FUJIKO • FUJITA • FUKAMATSU CONSTRUCTION • GIFU BIOMASS POWER • GLOBAL JAPAN • GOYO CONSTRUCTION • GPE • HAKODATE REGIONAL INDUSTRY PROMOTION FOUNDATION • HYOGO PREFECTURE • ICHIKAWA CITY AGRICULTURAL COOPERATIVE • ICHIKAWA ENVIRONMENT HOLDINGS | <ul style="list-style-type: none"> • DEMITSU KOSAN • IIISHI BIO PARTNERS • IKEDA KOGYO • INFLUX • INPEX SOLUTIONS • ISHIKAWA KOGYO • JAPAN AGRICULTURE, FORESTRY AND FISHERIES RESEARCH AND DEVELOPMENT ASSOCIATION • JAPAN COMSIS • JAPAN INFRASTRUCTURE FUND ADVISORS • JAPAN INTERNATIONAL COOPERATION AGENCY • JAPAN INTERNATIONAL RESEARCH CENTER FOR AGRICULTURAL SCIENCES • JAPAN PAPER • JAPAN RE-TECH • JERA • JFE ENGINEERING • JGC GLOBAL • JUMONJI CHICKEN COMPANY • KAJIMA CORPORATION | <ul style="list-style-type: none"> • KAKUKO CONSTRUCTION • KAMAKURA CITY • KAMIJO DISTRICT FOREST COOPERATIVE • KANSAI ELECTRIC POWER • KANSAI HOLDINGS • KAWASAKI BIOMASS POWER GENERATION • KIZUNA • KOBE STEEL ENVIRONMENTAL SOLUTIONS • KOIKE CONSTRUCTION • KOJO • KURIYAMA TOWN • KYUDEN MIRAI ENERGY • MAKURAZAKI BIOMASS POWER PLANT • MIE PREFECTURAL INDUSTRIAL RESEARCH INSTITUTE • MINISTRY OF AGRICULTURE, FORESTRY AND FISHERIES • MIYAZAKI BIOMASS RECYCLING • MIZOBUCHI FORESTRY • MURAI DISTRIBUTION ANAGEMENT INSTITUTE | <ul style="list-style-type: none"> • NAITO STEEL INDUSTRY • NANKO KOGYO • NEW POWER DEVELOPMENT • NIPPON STEEL ENGINEERING • NTT ANODE ENERGY • OBAYASHI CORPORATION • OGATSU BIOMASS POWER GENERATION • OKUMURA CONSTRUCTION GROUP • OSMIC • PETROLEUM RESOURCES DEVELOPMENT • POWER DEVELOPMENT • PROSPEC AZ • RINKAI NISSAN CONSTRUCTION • SANKI CHEMICAL INDUSTRIAL CONSTRUCTION • SANKI KOGYO • SEA ENERGY • SEIBU LANDSCAPING • SEKINE • SHARI TOWN • SHICHIGO | <ul style="list-style-type: none"> • SHIMANE FOREST POWER GENERATION • SHIMIZU CONSTRUCTION • SHIN ENERGY DEVELOPMENT • SHOJI LUMBER • SHUSSHIN KUMIAI • SODEGAURA BIOMASS POWER GENERATION • SOLARIANT CAPITAL • SOLCOM • SPARKS ASSET MANAGEMENT • SUMITOMO ELECTRIC INDUSTRIES • SUMITOMO FORESTRY • SUMITOMO MITSUI FINANCE AND LEASE • SUMMIT ENERGY • SUNLIFE • SUZUYO TRADING • TAIRA POULTRY BUSINESS COOPERATIVE • TAKAKATSU HOLDINGS • TAKAYAMA BIOMASS RESEARCH INSTITUTE • TAKEEI | <ul style="list-style-type: none"> • TAKEEI GREEN RECYCLING • TAKENAKA CORPORATION • TAKUMA • TAMURA BIOMASS ENERGY • TEIKOKU ZORIN • TOA CONSTRUCTION INDUSTRY • TOHOKU TOWN FOREST COOPERATIVE • TOKO DENKI KOGYO • TOKYO ENERGY & SYSTEMS • TOKYO GAS ENGINEERING SOLUTIONS • TOKYO INDUSTRY • TOKYO PROPERTY MANAGEMENT • TOSHIBA ENERGY SYSTEMS • TOSHIBA PLANT SYSTEMS • TOYO NAMIHEI BIOMASS POWER PLANT • T'S WORKS • TSUNEISHI GREEN ENERGY • T-WAI • V&T ENERGY MANAGEMENT • WOODONE | <ul style="list-style-type: none"> • YONDENKO ENGINEERING • YOSHIOKA CONSTRUCTION • YOTSUICHI CITY • YOUR ENERGY DEVELOPMENT <p>...and more</p> |
|--|--|---|---|--|--|--|---|

Co-held Conference by Industry Front-runners Attract More Visitors



Past Conference Speakers (excerpts, in random order, honorifics omitted)

Company names, professional affiliation, and official positions are at the time of the presentation and edited for space.



Kotaro Shimizu
Director,
Environment and Biomass Policy
Div., Minister's Secretariat,
**Ministry of Agriculture,
Forestry and Fisheries**



Shinjiro Sasaki
Director,
Office for Circular and Ecological
Economy
Ministry of the Environment



Takeshi Ariyama
Deputy Director,
Wood Use Promotion Div.,
Forestry Agency of Japan



Fumihiro Kajikawa
Director,
**Ministry of Economy, Trade and
Industry**



Brent Wanner
Head of Power Sector Unit
World Energy Outlook
International Energy Agency (IEA)



Masayuki Inoue
Senior Executive Officer,
Osaka Gas Co., Ltd./



Takanobu Yasunaga
Managing Director
erex Ltd.



Toshihiko Okamoto
Representative,
TOMOE TECHNO Co., Ltd.



Takanori Sudo
CEO,
Flow Inc.



Hiroshi Aoyama
CEO,
Aburatou Shoji Co., Ltd.



Tomotaka Kumagai
Chief Executive Officer,
Biostock Corp.



Kazuhiro Moriyama
President & Chief
Executive Officer,
Morisho Co., Ltd.



Masahiro Inui
Chief Executive Officer,
SymEnergy Inc.



Hiroyoshi Wada
Assistant General Manager,
Business Design Dept.,
West Japan Railway Co.

Spring Edition (Mar): Boost your brand and expand globally!

Highlights of the Spring edition

- The world's leading exhibition for renewable energy technologies
- Connect with global industry leaders
- Best place for brand exposure and lead generation

Recommended for...

- Looking to go big, get noticed — elevate your presence in the industry
- Tap into global markets right from Japan

Floor Plan (preliminary)



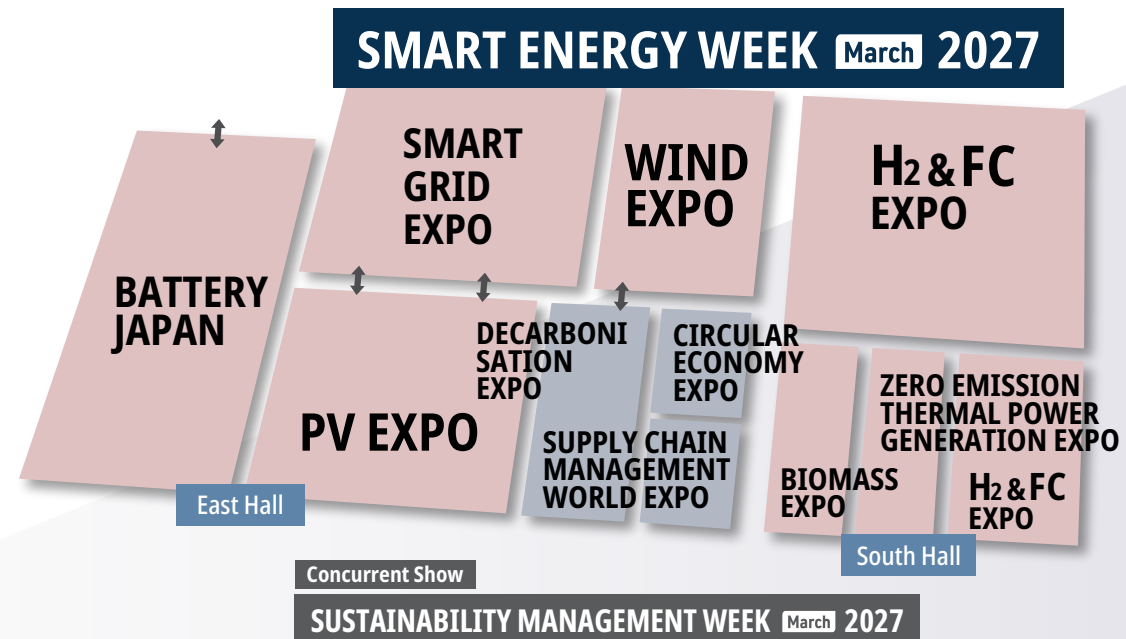
Dates: Mar. 24 [Wed] - 26 [Fri], 2027

Venue: Tokyo Big Sight, Japan

Exhibitors 1,600

Visitors 75,000

(Forecasts)



Note: 10% consumption tax to be added.

Exhibiting Fee

1 Booth (6.0m×2.7m=16.2m²)

6.0m

1 Booth

2.7m

Limited to booth space. Not included: Booth design and construction.

March 2027 Tokyo edition

Exhibit Space.....JPY 1,300,000 / Booth

Corner Charge.....JPY 100,000 / Corner

Expomaster *	Premium	JPY 650,000
	Standard	JPY 150,000
	Basic	JPY 50,000
	(Co-Exhibiting Charge	JPY 50,000)

Choose one of the three options below. If you have any co-exhibitors, the "With Co-Exhibitor" rate applies. All prices are excluding tax.

Expo Master (Mandatory)

Includes listing on the exhibitor search site — a great way to promote your company in advance. Advertising impact varies by plan. Please choose one of the three required options.

Basic



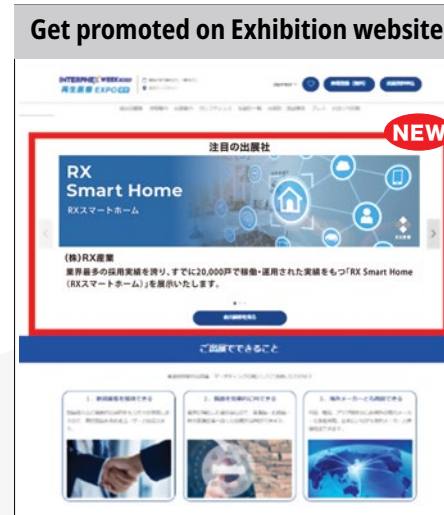
**Company Name
and Logo only**

Standard



**Large size
Display of Product**

Premium



NEW

Exhibitor Directory



**Large size +
Top Placement**

Limited to
6 companies

Learn more about: Expo Master

Rental Display

Check Out Our 3 Basic Booth Options!

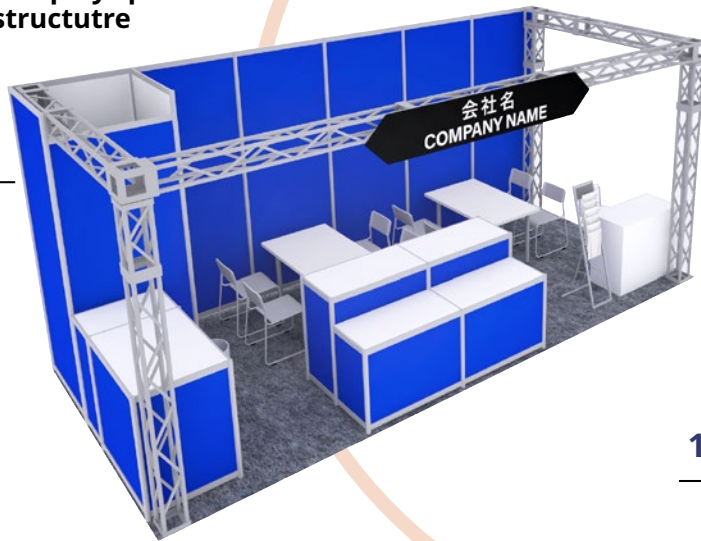
Designed to Fit Your Needs and Budget

Note: 10% consumption tax to be added.

Create a strong impression at the venue with ample display space and impactful booth structure

Type A
1 Booth (6mx2.7m)

JPY 620,000



Customise your booth to suit your exhibition needs and greater impact!

Design Type
1 Booth (6mx2.7m)

JPY 620,000

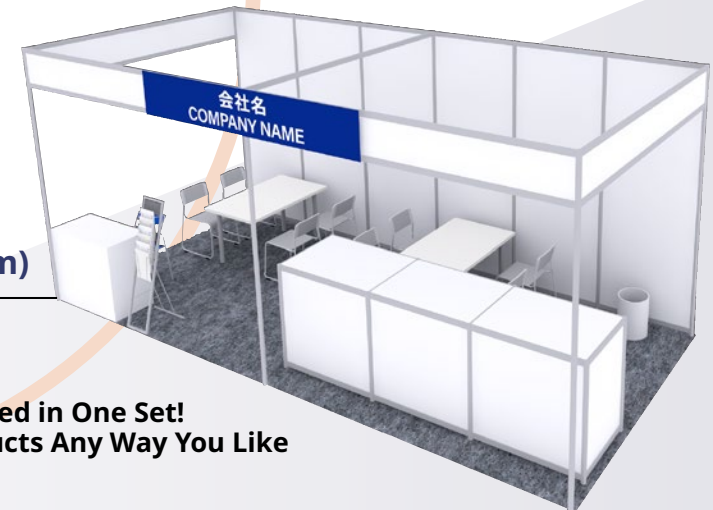


Example: Business Meeting Plan A

Type B
1 Booth (6mx2.7m)

JPY 480,000

Everything You Need in One Set!
Display Your Products Any Way You Like



[Learn more about: Rental Booth](#)

Boost your visibility with our Sponsor Plan

Choose from Three Sponsor Plans — Each Comes with a Sponsor Board and Multiple Advertising Features.

Diamond Elite
★★★★

Limited to 10 Companies

Diamond Elite
JPY 3,000,000

Platinum Elite
★★★

Platinum Elite
JPY 2,000,000

Gold Elite
★

Gold Elite
JPY 1,000,000

Plan Details

Note: 10% consumption tax to be added.

Large LED Advertising Displays Inside the Exhibition Hall

Diamond Elite
★★★★



25年春展 イメージ図

Banner Placement on the Official Website

Diamond Elite
★★★★

Platinum Elite
★★★



Logo Placement on Sponsor Boards

Diamond Elite
★★★★

Platinum Elite
★★★

Gold Elite
★★



Large LED Advertising Displays Inside the Exhibition Hall

Logo Placement on Sponsor Boards

Email Advertising for Visitor Attraction

Enhanced Listing on Exhibitor Directory

[Learn more about: Sponsorship Opportunity](#)

Want more leads? Choose the Advertising Plan.

Note: 10% consumption tax to be added.

Exhibitor Presentation

JPY 400,000 per slot

A 30-minute presentation slot at a special venue in the exhibition hall



Digital Incentive Coupons

JPY 600,000

Send Coupons to Pre-Registered Visitors!
Get Lead Info on Everyone Who Downloads Your Offer

Average downloads: 568
= Average number of leads (business card info) acquired

Based on the average from RX Japan exhibitions held in 2022–2023



We Also Offer a Package Plan That Enhances Both Brand Awareness and Lead Generation!

Maximise Your Sales Performance

Sponsorship Plan

+

Exhibitor Presentation

Digital Advertising Display

Expo Master Premium Plan

Distributing Coupons

From JPY 3,500,000

Brand Awareness Plan

Sponsorship Plan

+

Digital Signage Ads

Expo Master Premium Plan

From JPY 2,500,000

Lead Generation Plan

Exhibitor Presentation

Digital Incentive Coupons

JPY 1,000,000

Support Services for Exhibitors



We Provide a **Step-by-Step Exhibitor Guide** for First-Time Participants

Individual Meetings with Your **Exhibition Success Team** (optional)

Topics Covered:

- How to Create an Effective Booth
- Case Studies of Successful Exhibitors and More

We offer rental Booth Design and build (Rental Display - Optional)

Two Promotional Emails Sent To Industry Stakeholders With Your Product Information.

*We do not provide matching services

Join as an Exhibitor – Apply Now!

Exhibition Information:

- Application Form
- Previous Results Report
- Advertising Plans
- Helpful Information
- Exhibition Space Availability (Updated Regularly)
- EXPO MASTER
- Rental Display
- FAQ
- etc...



Exhibition Information List



CHOOSE YOUR BOOTH LOCATION ON A FIRST-COME-FIRST-SERVED BASIS!

Contact

Organiser: RX Japan GK BIOMASS EXPO Show Management
11F, Yaesu Central Tower, Tokyo Midtown Yaesu, 2-2-1 Yaesu Chuo-ku, Tokyo 104-0028, Japan



E-mail: bm-expo.jp@rxglobal.com



Tel: +81-3-6739-4119



Web: www.wsew.jp/bm/