

Exhibiting Information for Next Shows



World Meets Energy SMART ENERGY WEEK

Concurrent
Show



Transforming Businesses, Building a Sustainable World

SUSTAINABILITY MANAGEMENT WEEK

13th Osaka Show

Dates: **Nov. 19 [Wed] - 21 [Fri], 2025**

Venue: **INTEX Osaka, Japan**

24th March Show

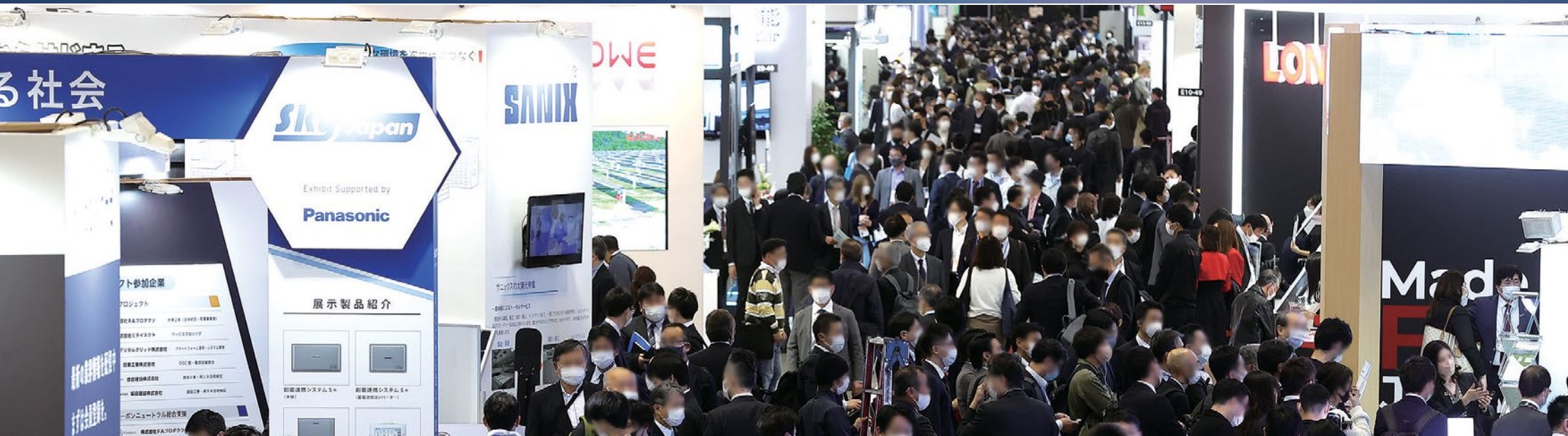
Dates: **Mar. 17 [Tue] - 19 [Thu], 2026**

Venue: **Tokyo Big Sight, Japan**

24th September Show

Dates: **Sep. 9 [Wed] - 11 [Fri], 2026**

Venue: **Makuhari Messe, Japan**



Built by



In the business of
building businesses

Organiser

RX Japan Ltd.

World's Leading Renewable Energy Technology Exhibition

Scenes from Osaka edition (Nov. 2021)

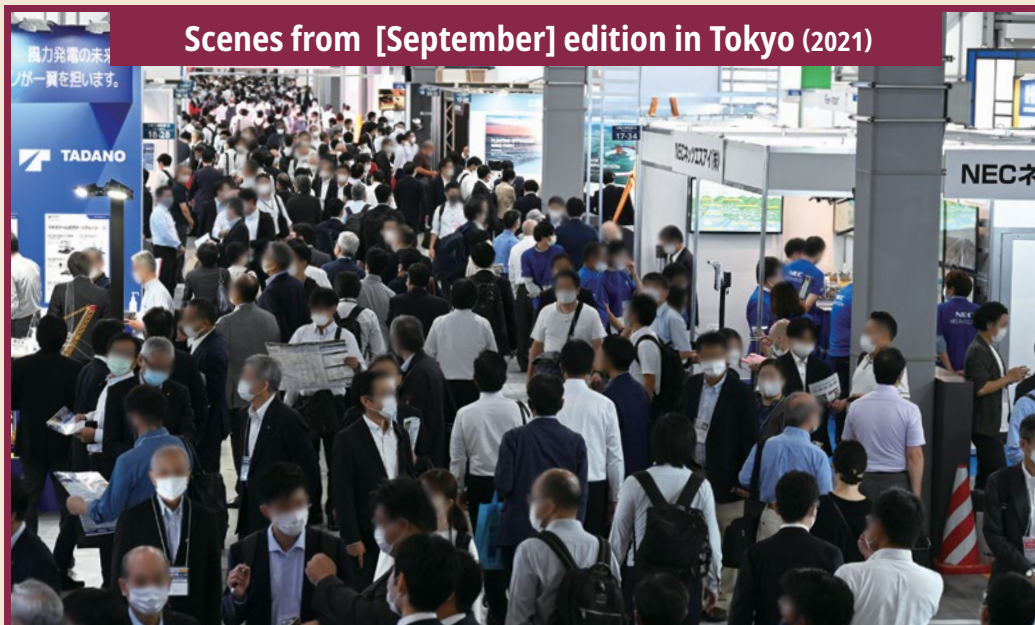


Scenes from [March] edition in Tokyo (2022)



World's Leading Renewable Energy Technology Exhibition

Scenes from [September] edition in Tokyo (2021)



Show Report in Videos

Osaka Edition

<https://youtu.be/gbF5c4jCRVw>

If you cannot access YouTube

▶▶ <https://v.qq.com/x/page/a35712ec8kt.html>



[March] Edition

<https://youtu.be/8T4SFvEOs7E>

If you cannot access YouTube

▶▶ <https://v.qq.com/x/page/y35411nb4il.html>



[October] Edition

https://youtu.be/_1ki-MQJbW8

If you cannot access YouTube

▶▶ <https://v.qq.com/x/page/z3566akhsd3.html>



Held with Tech. Exhibition for Sustainable Society



World Meets Energy

SMART ENERGY WEEK

Comprehensive Renewable Energy Technology Exhibition

Technologies for energy-saving/creating/storing and smart cities gather in 9 consisting shows of Smart Energy Week.

Consisting Shows

- H2 & FC EXPO
- SMART GRID EXPO
- ZERO-E THERMAL EXPO
- PV EXPO
- WIND EXPO
- BATTERY JAPAN
- BIOMASS EXPO
- CUSS EXPO
- FUSION POWER WORLD



See next page for the details ►►

Concurrent Show



Transforming Businesses, Building a Sustainable World

SUSTAINABILITY MANAGEMENT WEEK

Comprehensive Sustainability Exhibition

DECARBONISATION EXPO

CIRCULAR ECONOMY EXPO

SCM – Supply Chain Management– WORLD

Covering All the Categories of Renewable Energy Technology



World Meets Energy SMART ENERGY WEEK

H₂ & FC EXPO Int'l Hydrogen & Fuel Cell Expo

Exhibit Profile

- Device/Material
- Evaluation, Testing, Analysis
- Manufacturing Technology
- Hydrogen Supply/Manufacturing/Storage etc.

SMART GRID EXPO Int'l Smart Grid Expo

Exhibit Profile

- Power Equipment for Grid Connection
- Communication Equipment
- HEMS/BEMS
- Energy Storage System etc.

BATTERY JAPAN Int'l Rechargeable Battery Expo

Exhibit Profile

- Device/Material
- Inspection/Testing/Evaluation Equipment
- Manufacturing Equipment
- Rechargeable Battery (Automobile/Stationary/Mobile) etc.

BIOMASS EXPO Int'l Biomass Expo

Exhibit Profile

- Biomass Fuel
- Crusher, Pulveriser
- Dehydrator, Dryer
- Inspection/Testing Technology etc.

*limited to February edition

WIND EXPO Int'l Wind Energy Expo

Exhibit Profile

- Component, System Equipment
- Analysis/M Measurement
- Construction/Transportation
- Offshore Wind Farm Technology etc.

*limited to February and September edition

CCUS EXPO

Int'l Carbon Dioxide Capture, Utilisation and Storage Expo

*limited to February edition

ZERO-E THERMAL EXPO Zero Emission Thermal Power Generation Expo

Exhibit Profile

- Thermal Power Generation System
- CO₂ Capture/Storage Technology
- etc.

*limited to February edition

PV EXPO

Int'l Photovoltaic Power Generation Expo

Exhibit Profile

- PV Power Generation System
- Power Conditioner
- Construction/EPC Service
- Mounting System, Foundation Material etc.



FUSION POWER WORLD

*limited to September and November edition

Held 3 Times a Year – Twice in Tokyo & Once in Osaka

Osaka Show

Largest Show in Western Japan Area

Dates: **Nov. 19** [Wed] - **21** [Fri], 2025

Venue: **INTEX Osaka, Japan**

"Largest" in reference to the exhibitor number and the net exhibit space of trade shows with the same concept. *expected, including concurrent show

- ◆ Largest exhibition for renewable energy tech. in western Japan
- ◆ Held in Osaka, the second largest city in Japan
- ◆ About 80% of visitors are from western Japan while more than 80% of the visitors of Tokyo editions are from eastern Japan

Number of Exhibitors

200 Exhibitors*

Number of Visitors

15,000 visitors*



SMART ENERGY WEEK Osaka 2025

CIRCULAR ECONOMY EXPO

Concurrent Show

GREEN TRANSFORMATION WEEK Osaka 2025

DECARBONISATION EXPO

BATTERY JAPAN

PV EXPO

H₂ & FC EXPO

SMART GRID EXPO

FUSION POWER WORLD

Hall 6 B

Hall 6 A

Held 3 Times a Year – Twice in Tokyo & Once in Osaka

March Show
Tokyo

World's Leading Exhibition in Scale

Dates: **Mar. 17** [Tue] - **19** [Thu], 2026

Venue: **Tokyo Big Sight, Japan**

*expected, including concurrent shows

- ◆ Launched in 2005 and has grown as the world's leading exhibition for renewable energy technology
- ◆ A business platform for the first half of the year

Number of Exhibitors

1,600 Exhibitors*

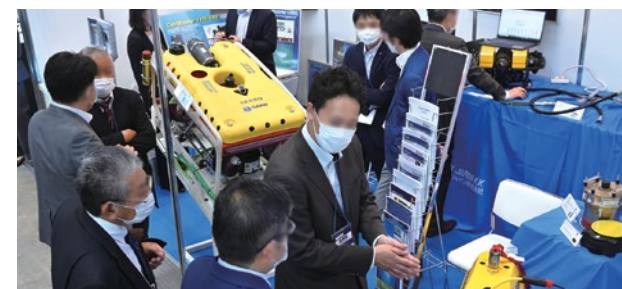
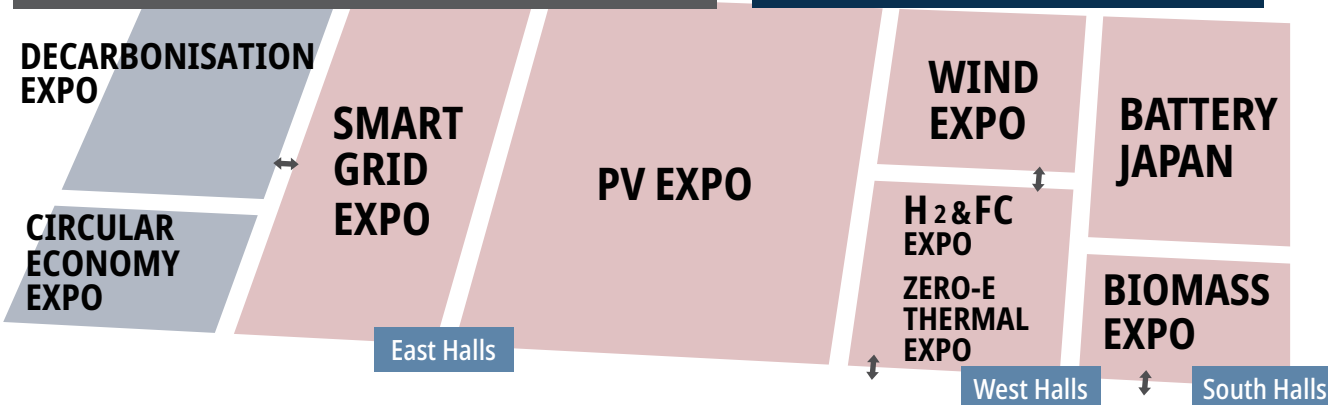
Number of Visitors

75,000 visitors*

Concurrent Show

SUSTAINABILITY MANAGEMENT WEEK March 2026

SMART ENERGY WEEK March 2026



Held 3 Times a Year – Twice in Tokyo & Once in Osaka

September Show Tokyo

Business Platform for the Second Half of the Year

Dates: **Sep. 9** [Wed] - **11** [Fri], 2026

Venue: **Makuhari Messe, Japan**

*expected, including concurrent and co-held shows

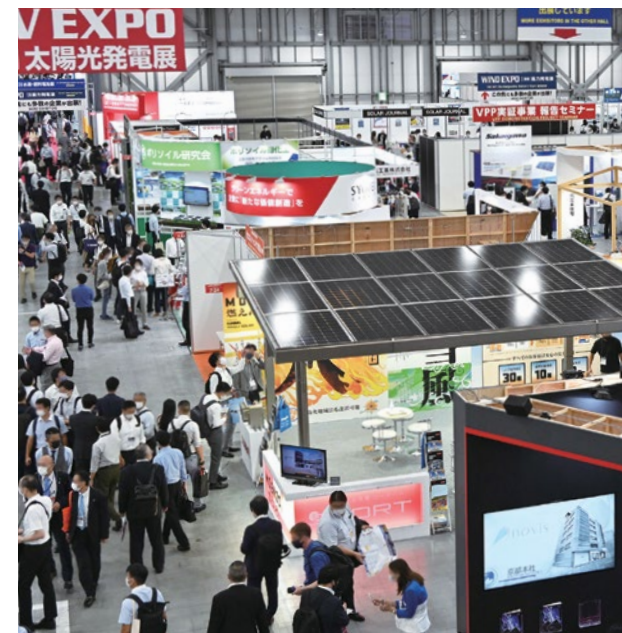
- ◆ The best business platform for the second half of the year
- ◆ Consists of 7 specialized shows for the Energy side and 3 Sustainability related exhibition including SCM World to be concurrently held

Number of Exhibitors

500 Exhibitors*

Number of Visitors

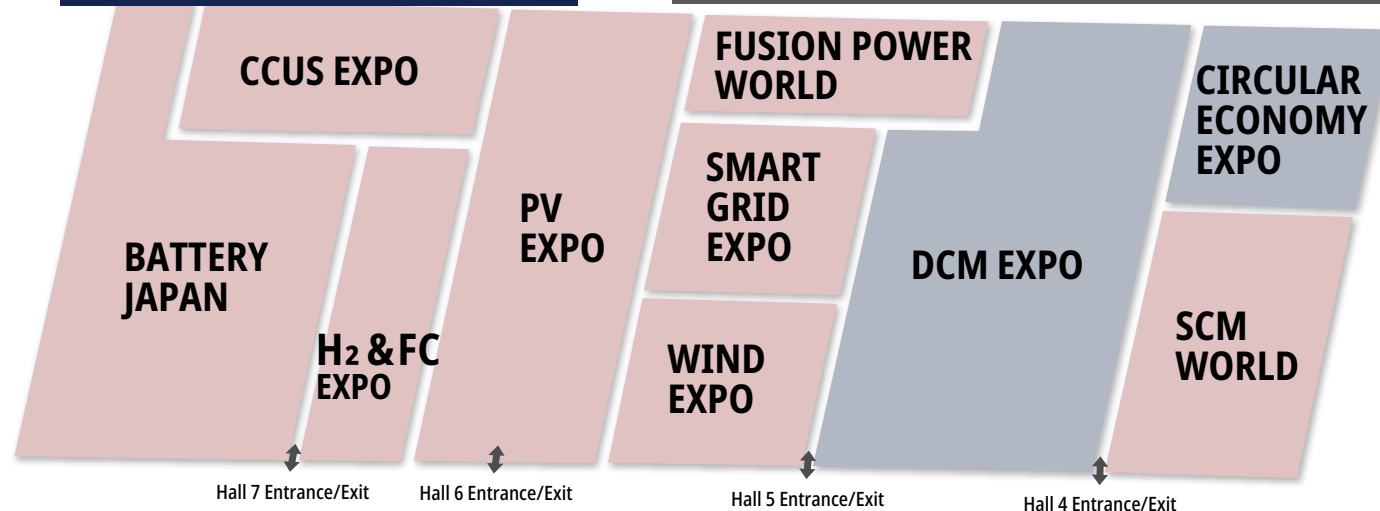
45,000 visitors*



SMART ENERGY WEEK September 2026

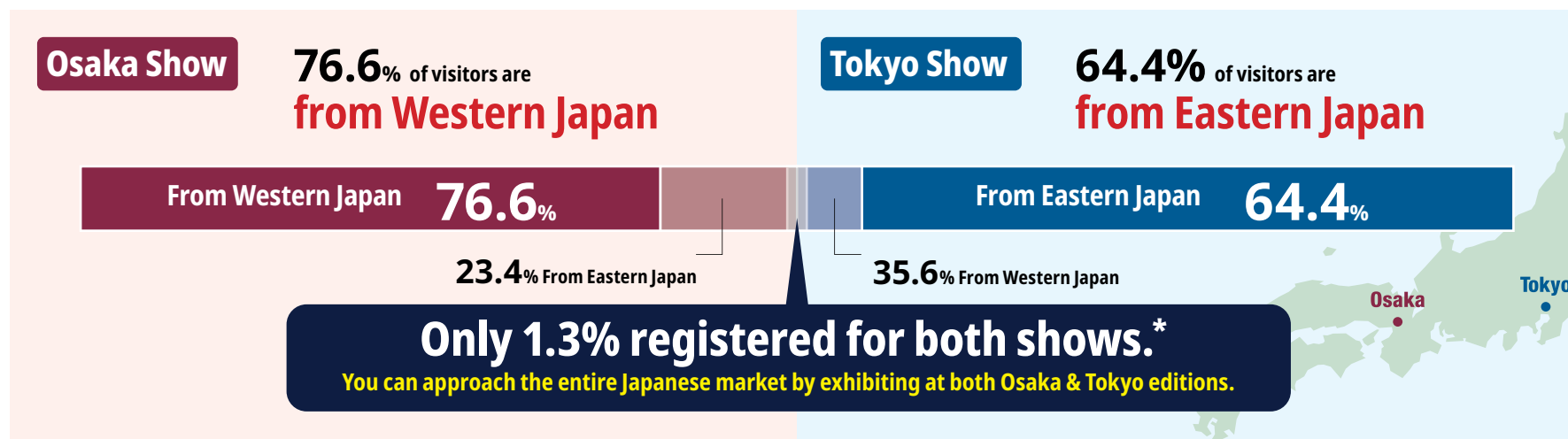
Concurrent Show

SUSTAINABILITY MANAGEMENT WEEK September 2026



Meet Broad Range of Companies from Entire Japan

Visitors by Regions



*The numbers are based on visitor registrations of World Smart Energy Week Osaka and [March] Tokyo in 2023 to 2024.

Major Visiting Companies (In alphabetical order/Company names are excerpts and shortened.)

- | | | | | | |
|------------------------------|--------------------------------|-------------------------------------|---------------------------|-----------------------------------|--|
| ◆ AIR PRODUCTS AND CHEMICALS | ◆ GE RENEWABLE ENERGY | ◆ JAPAN WIND DEVELOPMENT | ◆ LOOOP | ◆ NTT ANODE ENERGY | ◆ TESLA MOTORS |
| ◆ AISIN | ◆ GENERAL MOTORS | ◆ JAXA | ◆ MARUBENI | ◆ NTT SMILE ENERGY | ◆ TOHOKU ELECTRIC POWER |
| ◆ AJINOMOTO | ◆ GS YUASA | ◆ JERA | ◆ MAXELL | ◆ ORSTED | ◆ TOKYO ELECTRIC POWER COMPANY |
| ◆ ASIA PACIFIC FUEL CELL | ◆ H2POWERTECH | ◆ JFE ENGINEERING | ◆ MITSUBISHI | ◆ PANASONIC | ◆ TOKYO GAS |
| ◆ BLUE ENERGY | ◆ HITACHI | ◆ JFE STEEL | ◆ MITSUBISHI ELECTRIC | ◆ PENTA-OCEAN CONSTRUCTION | ◆ TOKYO METROPOLITAN GOVERNMENT |
| ◆ BMW | ◆ HITACHI ZOSEN | ◆ JR WEST REAL ESTATE & DEVELOPMENT | ◆ MITSUBISHI MOTORS | ◆ RENOVA | ◆ TOSHIBA |
| ◆ BOSCH | ◆ HOKKAIDO GOVERNMENT | ◆ KANSAI ELECTRIC POWER | ◆ MITSUBISHI POWER | ◆ SAMSUNG SDI | ◆ TOSHIBA ENERGY SYSTEMS & SOLUTIONS |
| ◆ CATL | ◆ HONDA MOTOR | ◆ KAWASAKI HEAVY INDUSTRIES | ◆ MITSUI FUDOSAN | ◆ SHARP | ◆ TOSHIBA MITSUBISHI-ELECTRIC INDUSTRIAL SYSTEMS |
| ◆ CHINA FAW GROUP | ◆ HYOGO PREFECTURAL GOVERNMENT | ◆ KYOCERA | ◆ MURATA MANUFACTURING | ◆ SIEMENS GAMESA RENEWABLE ENERGY | ◆ TOYOTA MOTOR |
| ◆ CHUGOKU MOKUZAI | ◆ HYUNDAI MOTOR | ◆ LG CHEM | ◆ NEC | ◆ SONY | ◆ VESTAS JAPAN |
| ◆ DOOSAN FUEL CELL | ◆ IHI | ◆ LG ELECTRONICS | ◆ NEDO | ◆ SUMITOMO ELECTRIC INDUSTRIES | etc. |
| ◆ ENEOS | ◆ INTELLIGENT ENERGY | ◆ LG ENERGY SOLUTION | ◆ NIPPON PAPER INDUSTRIES | ◆ SUMITOMO FORESTRY | |
| ◆ EURUS ENERGY HOLDINGS | ◆ ITOCHU ENEX | | ◆ NISSAN MOTOR | | |

Chosen by Leading Companies in the Industry

Past Major Exhibitors (In alphabetical order/Company names are excerpts and shortened.)

FC CANADIAN HYDROGEN AND FUEL CELL ASSOCIATION
 FC CHIYODA
 WIND DENZAI
 WIND ENERCON
 BJ FDK CORPORATION
 SG FUJITSU
 BJ FURUKAWA BATTERY
 WIND GS
 BJ HANWHA CHEM
 SG HANWHA Q CELLS JAPAN
 SG HITACHI
 WIND HITACHI ZOSEN
 WIND HOKUTAKU
 FC HONDA MOTOR
 PV HUAWEI TECHNOLOGIES JAPAN
 FC HYUNDAI MOBIS
 FC HYUNDAI MOTOR
 ZET IHI
 BM ITOCHU MACHINE-TECHNOS
 FC IWATANI
 ZET JERA

WIND JFE GROUP
 WIND JGC HOLDINGS
 PV JINKOSOLAR JAPAN
 ZET KANDEN PLANT
 FC KAWASAKI HEAVY INDUSTRIES
 WIND "K" LINE
 BM KYOKUTO BOEKI
 BJ LG CHEM
 PV LG ELECTRONICS
 BJ LG ENERGY SOLUTION
 PV LONGI SOLAR TECHNOLOGY
 SG MITSUBISHI ELECTRIC
 SG MITSUBISHI HEAVY INDUSTRIES
 ZET MITSUBISHI POWER
 WIND MITSUI O.S.K. LINES
 SG MURATA MANUFACTURING
 SG NEC
 WIND NIPPON STEEL
 WIND NYK LINE
 WIND OBAYASHI
 PV OMRON

WIND ORSTED
 SG PANASONIC
 WIND PENTA OCEAN CONSTRUCTION
 BJ SAMSUNG SDI
 BJ SEKISUI CHEMICAL
 WIND SIF GROUP
 BM SUMITOMO FORESTRY
 BM SYMENERGY
 PV TABUCHI ELECTRIC
 WIND TADANO
 WIND TAISEI
 WIND TOKO ELECTRICAL CONSTRUCTION
 SG TOSHIBA ENERGY SYSTEMS & SOLUTIONS
 WIND TOYO CONSTRUCTION
 FC TOYOTA MOTOR
 PV TRINA SOLAR JAPAN
 WIND VENSYS ENERGY
 WIND VESTAS JAPAN
 BM YANMAR ENERGY SYSTEM
 PV YASKAWA ELECTRIC

etc.

Exhibit and Expand Your Business in Japan and Asia

■ Achievements of Exhibitors

Exhibitors of [September] /Osaka Show 2021 and [March] Show 2022



TAOKE ENERGY CO., LTD.

On the opening day, a customer we had never dealt with before came in and the storage battery system on display was sold on the spot.



GOTION JAPAN CO., LTD.

There were nearly 1,000 business meetings over the three days with suppliers, those in development, automakers, etc.



MARUHACHIDOKEN CO., LTD.

More than 100 people visited our booth on the first half day alone, and we felt that about 10-20% of them might lead to orders.



ZEROBOARD INC.

We were thrilled that so many visitors came to our booth that we could not handle them when the doors opened at 10:00 a.m.

Excerpts from questionnaire by exhibiting companies, including concurrent shows.

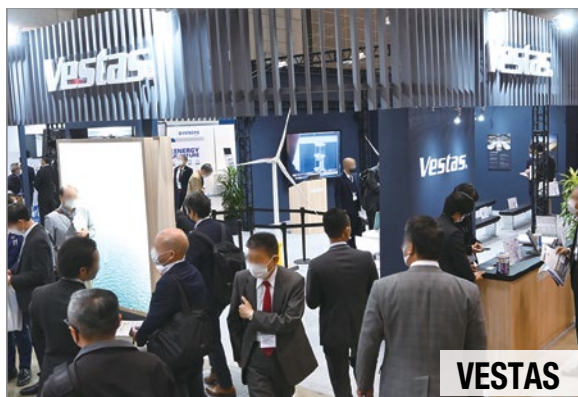
Follow the Steps & Secure Your Booth

■ How to Book Your Exhibit Space

- 1 Choose the Exhibitions & Editions to Exhibit**
- 2 Decide the Booth Size & Location (Please jump to Booth Availability from button below.)**
- 3 Send the Contract Form to Show Management**



*For the latest info,
please contact Show Management.



Please feel free to contact us for any inquiries ➤



E-mail : wsew.jp@rxglobal.com



Web: www.wsew.jp/en-gb.html

Excerpts from questionnaire by exhibiting companies, including concurrent shows.

Choose When to Exhibit

Exhibition Schedule

	February/March Show	September Show	Osaka Show
2026	Mar. 17 [Tue] - 19 [Thu]	Sep. 9 [Wed] - 11 [Fri]	TBA



Useful Links

Exhibiting Info



Booth
Availability*

*For the latest info,
please contact Show Management.



Price List &
Rental Display
Options



Contract
Form



Advertisement
Options

Visiting Info



Info for
Visitors



Previous
Show Info

Consisting Shows

Official
Websites

Brochure
Download



We Look Forward to Welcoming You as an Exhibitor/Visitor.

Contact

Organiser: RX Japan Ltd. Smart Energy Week Show Management

11F, Yaesu Central Tower, Tokyo Midtown Yaesu, 2-2-1 Yaesu Chuo-ku, Tokyo 104-0028, Japan A division of Reed Business Registered in England, Number 678540



Email: wsew.jp@rxglobal.com



Tel: +81-3-6739-4119



Web: www.wsew.jp/en-gb.html

